

- SPACE QUALIFIED
- 10 - 500 MHz, 2 WAY, SMA

TECHNICAL DESCRIPTION / APPLICATION

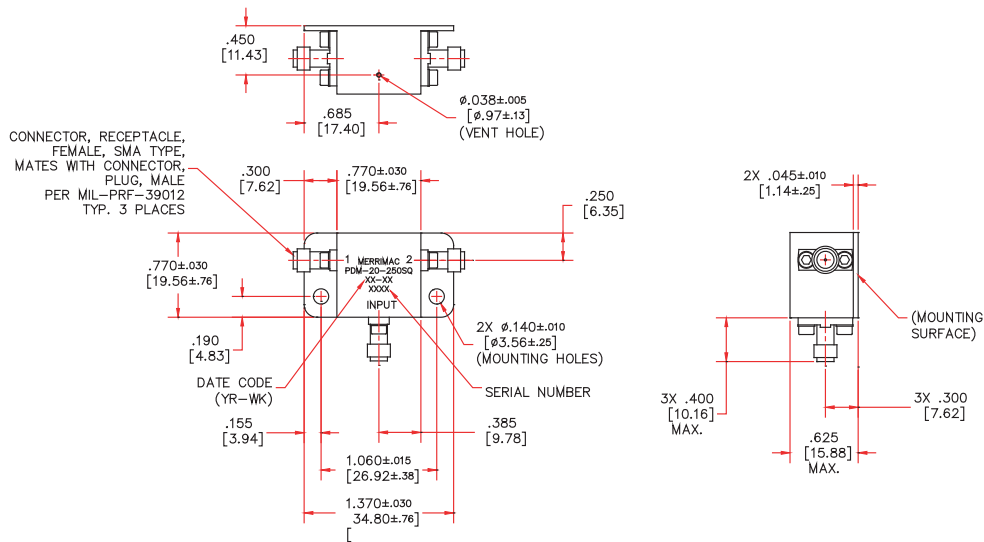
SERIES 03

The PDM-20-250 SQ In-Phase Power Divider/Combiner covers 10 - 500 MHz. It uses a lumped circuit technology design which provides high isolation and low VSWR. This device has been designed in accordance with Merrimac document CENG-0001, "Standard Design Requirements for Space Qualified Devices".

GENERAL SPECIFICATIONS

MODEL NUMBER	FREQUENCY RANGE MHz	ISOLATION dB MIN.	INSERTION LOSS MAX.		AMPLITUDE BALANCE MAX.	VSWR MAX
			10 - 400 MHz	400 - 500 MHz		
PDM-20-250 SQ	10 - 500	25	0.5 dB	0.6 dB	0.2 dB	1.3:1
PHASE BALANCE MAX.	CW INPUT WITH LOAD VSWR 1.2:1 WHEN USED AS A DIVIDER		INTERNAL LOAD DISSIPATION	IMPEDANCE NOM	OPERATING TEMPERATURE	WEIGHT MAX.
2°	1 W		100 mW max up to 70° C de-rate to 70 mW at 85° C	50 OHM	-55° to +85° C	28 g

PACKAGE OUTLINE



- NOTES:
 1. TOLERANCE ON 3 PLACE DECIMALS ±.020 [.51mm] EXCEPT AS NOTED.
 2. MAX. IS LARGEST DIMENSION ALLOWED.
 3. DIMENSIONS=INCHES [mm]

4. METRIC EQUIVALENTS ARE TO THE NEAREST .01mm.
 5. WEIGHT (MAX) 1.0 oz (28gms).
 6. MATERIAL FOR THE BODY: ALUMINUM ALLOY 6061, PER QQ-A-200 AND QQ-A-250.
 FINISH: MOUNTING SURFACE: CHEMICAL FILM PER MIL-C-5541, CLASS 3.
 BODY: AEROGLAZE Z307, BLACK PAINT.